

RESEARCH ARTICLE

Open Access

Atacept in combination with MMF and corticosteroids in lupus nephritis: results of a prematurely terminated trial

Ellen M Ginzler^{1*}, Stephen Wax², Anand Rajeswaran³, Samuel Copt³, Jan Hillson⁴, Eleanor Ramos⁴ and Nora G Singer⁵

Abstract

Introduction: Atacept is a soluble, fully human, recombinant fusion protein that inhibits B cell-stimulating factors APRIL (a proliferation-inducing ligand) and BLYS (B-lymphocyte stimulator). The APRIL- LN study aimed to evaluate the efficacy and safety of atacept in patients with active lupus nephritis (LN), receiving newly initiated corticosteroids (CS) and mycophenolate mofetil (MMF).

Methods: This was a randomized, double-blind, placebo-controlled Phase II/III, 52-week study. At screening (Day -14), patients initiated high-dose CS (the lesser of 0.8 mg/kg/day or 60 mg/day prednisone) and MMF (1 g daily, increased by 1 g/day each week to 3 g daily). From Day 1, atacept (150 mg, subcutaneously, twice weekly for 4 weeks, then weekly) was initiated with MMF along with a tapered dose of CS.

Results: The trial was terminated after the enrollment of six patients, due to an unexpected decline in serum immunoglobulin G (IgG) and the occurrence of serious infections. Efficacy was thus not evaluated. By Day 1, serum IgG levels had declined substantially in patients then randomized to atacept ($n = 4$) compared with placebo ($n = 2$). Patients receiving atacept also had more severe proteinuria on Day -14 than those on placebo. Lymphocyte counts were low at screening in all patients. IgG decline continued following initiation (Day 1) of atacept. Three atacept-treated patients developed serum IgG below the protocol-defined discontinuation threshold of 3 g/l, two of whom developed serious pneumonia.

Conclusions: Future studies are needed to characterize the safety, efficacy, and pharmacodynamic response of atacept in LN patients.

Trial Registration: ClinicalTrials.gov: NCT00573157

Keywords: atacept, clinical trial, immunoglobulin, lupus nephritis, mycophenolate mofetil, nephrotic-range proteinuria

Introduction

Current treatments for lupus nephritis (LN), a severe complication of systemic lupus erythematosus (SLE), may be associated with significant toxicity (for example, infertility, infection, malignancy), and complete remission rates remain low [1]. The pathogenesis of LN is complex and involves immune-mediated mechanisms, including autoantibody production and immune

complex deposition in the kidney [2]. Atacept is a soluble, fully human, recombinant fusion protein that inhibits the B cell-stimulating factors APRIL (a proliferation-inducing ligand) and BLYS (B-lymphocyte stimulator). APRIL and BLYS levels are altered in some autoimmune diseases associated with increased autoantibody production [3]. A Phase II/III randomized, double-blind, placebo-controlled clinical trial was initiated to evaluate the efficacy and safety of atacept in patients with active LN who were receiving newly initiated immunosuppressive therapy with corticosteroids (CS) and mycophenolate mofetil (MMF). This trial was

* Correspondence: ellen.ginzler@downstate.edu

¹SUNY Downstate Medical Center, 450 Clarkson Avenue, Box 42, Brooklyn, NY 11203, USA

Full list of author information is available at the end of the article

terminated after only six patients had been enrolled, as a result of unexpected falls in serum immunoglobulin G (IgG) and the occurrence of serious infections. No efficacy evaluation took place.

Materials and methods

Study design

On Study Day -14, patients commenced MMF (500 mg, twice daily, orally) and prednisone/prednisone equivalent (the lesser of 0.8 mg/kg/day or 60 mg/day, orally). MMF dose was increased to 1,000 mg twice daily at Day -7, thereafter up to a maximum of 1.5 g twice daily by Day 1. Day -14 to Day 1 was defined as the screening period. Patients fulfilling all entry criteria were randomized (1:1) on Day 1 to placebo or atacicept, 150 mg subcutaneously, twice weekly for 4 weeks, then 150 mg weekly for a planned 48 weeks. The CS dose was to be tapered starting at Week 5 by 5 mg/day/week, to 10 mg/day by Week 12. Assessments were scheduled post Day 1 at Weeks 2 and 4, then every 4 weeks to Week 52. Following the discontinuation of the study drug (completion of 52 weeks of treatment or early termination), follow-up visits were scheduled 4, 12 and 24 weeks after the last dose.

Patients

Key inclusion criteria were: SLE diagnosis satisfying ≥ 4 of the 11 American College of Rheumatology criteria [4]; positive antinuclear antibody test (Hep-2 antinuclear antibody $\geq 1:80$) and/or antibodies against double-stranded DNA ([anti-dsDNA] ≥ 30 IU/ml); renal biopsy within the 12 months preceding study entry, with histological findings consistent with active LN (International Society of Nephrology/Renal Pathology Society class III or IV LN); active LN, defined by proteinuria (urine protein:creatinine ratio [UPr:Cr] > 1.0 mg/mg) and hematuria (> 10 red blood cells [RBCs]/high-powered field [hpf] with or without RBC casts): all other causes of hematuria of non-glomerular origin were excluded. Key exclusion criteria were: renal disease unrelated to SLE; calculated glomerular filtration rate ([GFR] based on the Modification of Diet in Renal Disease equation) ≤ 30 ml/min/1.73 m² at screening; comorbidities requiring CS; progressive disease (25% decrease in GFR or doubling of UPr:Cr between screening and randomization). The Institutional Review Board or Ethics Committee at each center approved the study; written informed consent was obtained from each patient or their legal representative, according to the Declaration of Helsinki.

Criteria for discontinuation

Key criteria for discontinuation were: 25% decrease in calculated GFR or doubling of UPr:Cr compared with

baseline; IgG level < 3 g/L; minimal or no improvement in renal parameters at Week 24.

Results

Patient disposition and safety results

At the time of termination, six patients from four centers in the US had been randomized: two to receive placebo and four to receive atacicept (Table 1). Four patients were women and two men; the age range was 18 to 54 years.

The courses of the four atacicept-treated patients are described here. Three patients developed serum IgG levels below the protocol-defined discontinuation criterion. Patient #3 had an IgG level of 2.9 g/l on Day 29 and developed *Haemophilus influenzae* pneumonia complicated by empyema, septicemia and pneumothorax; treatment was discontinued on Day 30. Patient #13 had an IgG level of 2.5 g/l on Day 30; treatment was discontinued on Day 33 and the patient was diagnosed with *Legionella pneumophila* pneumonia on Day 34. Patient #14 had an IgG of 2.5 g/l and was discontinued on Day 18. At Week 12 of the safety follow-up period, this patient developed *Bacillus* bacteremia. Patient #5 had atacicept administered until Day 230, when the study was discontinued. Her IgG level decreased from a baseline of 20.1 to 4.7 g/l at Week 12, and then gradually increased to 6.9 g/l at approximately Week 34 (when atacicept was terminated along with the study).

In both placebo-treated patients, IgG levels fell between Days 1 and 15, declining to nadirs at Weeks 4 and 8 above the lower limit of normal [LLN] (11.9 g/l in Patient #2; 10.2 g/l in Patient #8), before gradually increasing. Patient #2 discontinued study participation due to leukocytoclastic vasculitis, 148 days post randomization. Patient #8 continued until the time of study termination, 85 days post randomization.

The study was terminated early as a result of the above safety events and, thus, none of the patients reached full treatment to Week 52. Enrollment ceased and study drug administration stopped in all patients. All patients completed a 24-week post-treatment follow-up period. Table 1 provides demographic and disease history characteristics, study treatment duration, and reasons for discontinuation.

Laboratory measurements

Immunoglobulin levels across the study period are shown in Figure 1. Serum IgG levels were normal or elevated in all patients at screening. Following the initiation of MMF and CS, a marked reduction in IgG (up to 57%) was observed by Day 1 (Table 2; Figure 1A). The decreases were largest in those patients who were subsequently randomized to atacicept. Serum IgG levels

Table 1 Demographic characteristics, disease history, duration on study and reasons for discontinuation

Patient #	Race	Disease history ^a			Prior therapy		Study drug treatment duration (Days)	Reason for discontinuation
		SLE (Months)	LN (Months)	Prior renal flare	MMF	CTX		
2	African American	38	< 1	-	-	-	148	Leukocytoclastic vasculitis
8	Caucasian	46	38	+	+	-	85	Study termination
3	African American	< 1	< 1	-	-	-	29	<i>H. influenzae</i> pneumonia, IgG < 3 g/l
5	African American	3	< 1	-	-	-	230	Study termination
13	African American	52	52	+	+	+	31	IgG < 3 g/l ^b
14	Asian	32	< 1	+	+	+	18	IgG < 3 g/l

Patients' mean (SD) height and weight were 169.3 (9.7) cm and 83.3 (20.8) kg, respectively. Patients #2 and #8 randomized to placebo; Patients #3, #5, #13 and #14 randomized to atacept 150 mg subcutaneously twice weekly (4 weeks), then 150 mg weekly (48 weeks). ^aDisease history: time between SLE/LN diagnosis and consent. All patients had Class IV renal disease. ^bPatient #13 diagnosed with severe *Legionella* pneumonia on Day 34, 1 day after study discontinuation. CTX, cyclophosphamide; IgG, immunoglobulin G; LN, lupus nephritis; MMF, mycophenolate mofetil; SLE, systemic lupus erythematosus.

continued to decline between Days 1 and 14, by up to 47% versus Day 1 and 72% versus Day -14 (Table 2). Neither IgA nor IgM levels showed a consistent decrease among enrolled patients (Table 2; Figures 1B, C).

At screening, the patients subsequently randomized to atacept presented with more severe proteinuria (UPr:Cr \geq 3.0 versus \leq 2.3 mg/mg) and a lower mean GFR (52.1 versus 76.1 ml/min/1.73 m²) compared with those who were randomized to placebo on Day 1. Baseline GFR was particularly low in Patients #13 and #14, and remained so on Days 1 and 14. Whereas UPr:Cr had fallen below 1.0 mg/mg in Patient #2 on Days 1 and 14, and in Patient #8 on Day 14 (Day 1 reading unavailable), it remained high on Days 1 and 14 in patients randomized to atacept (range 5.6 to 18.0 mg/mg, with the exception of a value of 1.0 mg/mg in Patient #5 on Day 1). At the end of the study period, both placebo-treated and two atacept-treated patients (Patients #5 and #13) had UPr:Cr ratios that were lower than baseline values. In a third atacept-treated patient (Patient #3), the ratio was approximately the same as at baseline, and in Patient #14 it was higher than at baseline.

Patients entered the study with wide variations in counts of white blood cells (WBCs), absolute neutrophils, and absolute lymphocytes (Table 3). During the study, WBCs fluctuated in all patients but were within the normal range by the 24-week follow-up visit in all except Patient #5. Neutrophilia was common at screening and Day 1. Lymphocyte concentrations at screening were below or at the lower end of the reference range (0.9 to 4.3 \times 10⁹/l) in all patients (Table 3). In Patients #3 and #13, lymphocyte counts declined from a baseline (Day -14) level within the reference range (0.9 and 1.5 \times 10⁹/l, respectively) to Grade 2 lymphopenia by Day 1 (0.7 \times 10⁹/l in both). After addition of atacept, lymphocytes continued to decline in both patients, with

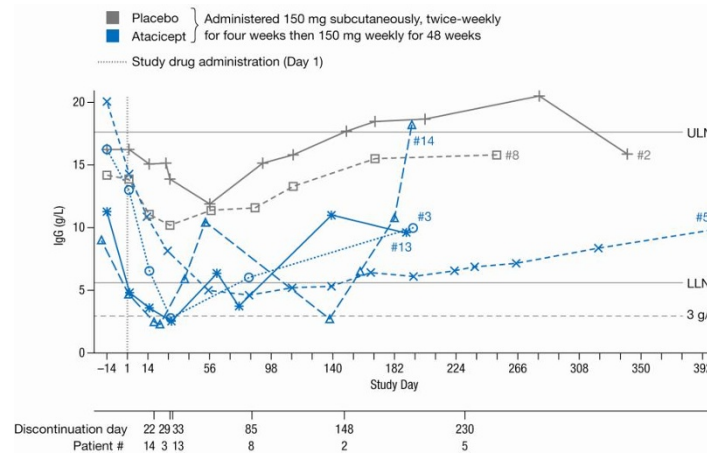
Grade 3 lymphopenia developing in Patient #3 on Day 29 (0.5 \times 10⁹/l), coincident with *H. influenzae* pneumonia, and in Patient #13 on Days 15 and 30, the latter (0.5 \times 10⁹/l) coincident with development of *L. pneumophila* pneumonia. CD4⁺ counts (not measured at screening) were also low on Day 1, in all patients measured.

On Day 1, one placebo- and three atacept-treated patients had C3 levels below the LLN (Table 3). C3 and C4 levels rose during treatment in all patients, but started and remained below the LLN in Patient #14 (on atacept), and were below the LLN at Day 1 and at end of treatment in Patient #2 (on placebo), having risen above the LLN during treatment. C3 levels were within the normal range at end-of-treatment assessments in the remaining three patients on atacept and one on placebo (Table 3).

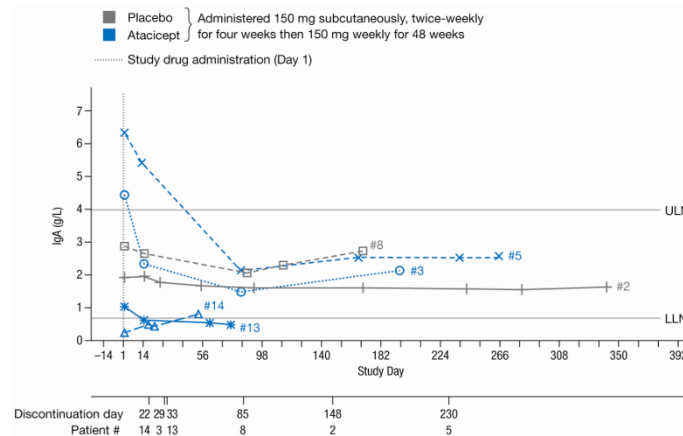
Discussion

This study was terminated as a result of the emergence of unexpected, profound and rapid declines in IgG levels and the occurrence of serious infections. Several factors complicate the interpretation of the results. First, the large decreases in IgG began with initiation of MMF and high-dose CS two weeks before the initiation of atacept (and continued IgG decrease). This was unexpected: to the authors' knowledge, such large decreases in IgG levels do not appear to have been reported in previous publications discussing MMF and/or CS treatment in patients with LN [5,6]. However, high-dose CS therapy has been reported to decrease IgG synthesis: in a patient with SLE, serum IgG levels fell from 1,580 to 630 mg/100 ml following 6 weeks' CS treatment (60 mg/day) [7]. In addition, hypogammaglobulinemia has been reported in approximately half of renal transplant patients receiving MMF in combination with CS [8]. It is of interest to note that an increased risk of infection has been observed in other LN studies during the

A



B



C

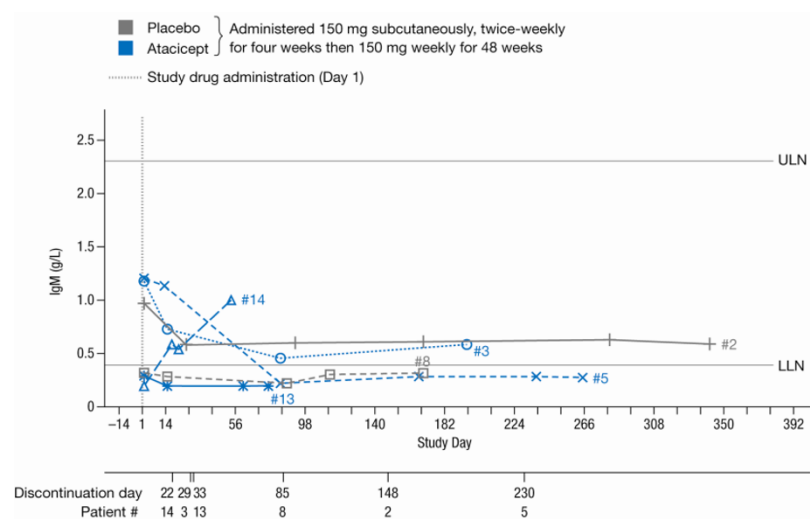


Figure 1 Immunoglobulin (Ig) levels in all six patients, across the study period. A) IgG, reference range (RR) 5.65 to 17.65 g/l, < 3 g/l represented study discontinuation threshold; **B) IgA**, RR 0.7 to 4 g/l; **C) IgM**, RR 0.4 to 2.3 g/l. IgA and IgM were not measured during the screening period (Days-14 to 1). Discontinuation days were not necessarily scheduled follow-up days. LLN, lower limit of normal; ULN, upper limit of normal.

Table 2 Renal parameters, immunoglobulin (Ig)A, IgG and IgM levels, and IgG course, Days-14 to 14

Patient #	Screening day (Day -14)*			Day 1						Day 14					
	GFR	UPr:Cr	IgG	GFR	UPr:Cr	IgA	IgM	IgG	IgG change from Day -14	GFR	UPr:Cr	IgA	IgM	IgG	IgG change from Day 1
	(ml/min/1.73 m ²)	(mg/mg)	(g/l)	(ml/min/1.73 m ²)	(mg/mg)	(g/l)	(g/l)	(g/l)		(ml/min/1.73 m ²)	(mg/mg)	(g/l)	(g/l)	(g/l)	(%)
2	73.5 ^L	1.6	16.3	68.4 ^L	0.2	1.9	1.0	16.3	0	45.3 ^{L1, a}	0.1 ^a	2.0 ^a	0.8 ^a	15.1 ^a	-7.4
8	78.7	2.3	14.2	76.3	N/A	2.9	0.3 ^L	13.9	-2.1	88.8 ^a	0.8 ^a	2.7 ^a	0.3 ^{L, a}	11.1 ^a	-20.1
3	73.4 ^L	8.2	16.3	81.6	5.6	4.5	1.2	13.0	-20.3	72.2 ^L	8.1 ^a	2.3 ^a	0.7 ^a	6.5 ^a	-49.7
5	74.5 ^L	3.0	20.1	89.0	1.0	6.3	1.2	14.3	-28.9	69.7 ^{L, b}	7.1	5.4 ^b	1.1 ^b	10.9 ^b	-23.8
13	33.6 ^{L2}	4.6	11.3	30.9 ^{L2}	12.4	1.1	0.3 ^L	4.9 ^L	-56.9	34.1 ^{L2, a}	8.4 ^a	0.6 ^{L, a}	< 0.2 ^L	3.6 ^{L, a}	-25.5
14	26.9 ^{c+, L2}	12.0	9.1	24.4 ^{L2}	18.0	< 0.3 ^L	< 0.2 ^L	4.8 ^L	-47.1	38.8 ^{L2, d}	9.0 ^d	0.5 ^{L, d}	0.6 ^d	2.5 ^{L, d}	-47.4

Patients #2 and #8 randomized to placebo; Patients #3, #5, #13 and #14 randomized to atacept 150 mg subcutaneously twice weekly (4 weeks), then 150 mg weekly (48 weeks). *IgA and IgM levels not recorded at screening; GFR, glomerular filtration rate; Ig, immunoglobulin; UPr:Cr, urine protein:creatinine ratio. Values > ULN indicated in italics; ^LValues < LLN with (Grade 1 to 4), where applicable; Ig reference ranges: IgA, 0.7 to 4.0 g/l; IgM, 0.4 to 2.3 g/l; IgG, 5.7 to 17.6 g/l. ^aMeasured Day 15; ^bMeasured Day 13; ^cMeasured Day -18; ^dMeasured Day 18. ⁺GFR > 30 ml/min/1.73 m² on repeat testing.

induction phase with MMF and high-dose CS, compared with the maintenance phase [9,10]. The results reported here raise the possibility that this increased risk may be associated with severe hypogammaglobulinemia.

A second factor is that, by chance, those patients who were subsequently randomized to atacept had higher

proteinuria at screening (and through to Day 14) than those subsequently randomized to placebo, and all atacept-randomized patients had UPr:Cr ratios ≥ 3.0 mg/mg at screening. This could have had a significant impact on the extent of IgG decrease. The magnitude of the decrease (up to 57% in the two weeks prior to

Table 3 Hematologic and serologic parameters Day -14 to end of treatment (EOT)

Patient #	White blood cells (× 10 ⁹ /l) RR 3.9-10.7				Absolute lymphocytes (× 10 ⁹ /l) RR 0.9-4.3				Absolute neutrophils (× 10 ⁹ /l) RR 2.0-7.2			
	Day -14	Day 1	Day 14 (± 1)	EOT	Day -14	Day 1	Day 14 (± 1)	EOT	Day -14	Day 1	Day 14 (± 1)	EOT
2	11.2	6.0	8.3	3.8	1.7	1.6	1.7	2.0	8.9	4.1	6.4	1.6 ^{L1}
8	6.3	15.1	12.4	8.1	0.8 ^{L2}	0.9	1.3	1.0	5.0	13.7	10.6	7.0
3	5.7	11.1	8.1	4.7	0.9	0.7 ^{L2}	0.5 ^{L2}	0.2 ^{L3}	4.4	10.1	7.4	4.3
5	2.8 ^{L2}	15.6	N/A	N/A	1.0	3.4	N/A	N/A	1.6 ^{L1}	10.6	N/A	N/A
13	14.7	5.6	8.5	7.6	1.5	0.7 ^{L2}	0.5 ^{L3}	0.7 ^{L2}	13.1	4.7	7.8	6.5
14	15.5 ^a	15.2	8.3 ^b	7.1	0.9 ^a	1.8	0.8 ^{L1, b}	0.8 ^{L1}	13.7 ^a	12.9	7.0 ^b	5.7

Patient #	CD4 ⁺ (cells/μl) [%] RR 404-1612 [33-58]			Complement C3 (g/l) RR 0.9-1.8			Anti-dsDNA (IU/ml) < 30.0, negative; 30-75, borderline; > 75, positive			
	Day 1	Day 28 (± 2)	EOT	Day 1	Day 14 (± 1)	EOT	Day -14	Day 1	Day 14 (± 1)	EOT
2	489 [25.8 ^L]	1731 [34.1]	980 [44.6]	0.686 ^L	0.904	0.721 ^L	917.2	375.7	168.1	463.9
8	277 ^{L2} [23.5 ^L] ^c	273 ^{L2} [29.7]	195 ^{L3} [24.0]	0.915	1.150	1.070	325.5	306.1	97.6	20.1
3	N/A	56 ^{L3} [13.7]	45 ^{L4} [21.4]	0.533 ^L	0.800 ^L	0.906	155.3	77.6	37.5	< 12.3
5	529 [22.1 ^L]	809 [30.1 ^L]	603 [46.8]	1.030	1.630	1.700	56.7	43.0	34.3	12.6
13	240 ^{L2} [38.7]	95 ^{L3} [23.8]	163 ^{L3} [19.3]	0.462 ^L	0.717	0.909	87.5	26.0	13.0	12.7
14	135 ^{L3} [19.1]	N/A	158 ^{L3} [19.9]	0.434 ^L	0.541 ^b	0.609 ^L	349.6	88.1	28.8 ^b	20.1

Patients #2 and #8 randomized to placebo; Patients #3, #5, #13 and #14 randomized to atacept 150 mg subcutaneously twice weekly (4 weeks), then 150 mg weekly (48 weeks). N/A, not available; RR, reference range. Values > ULN indicated in italics; ^LValues < LLN, with Grade (1 to 4), where applicable. ^aMeasured Day -10; ^bMeasured Day 18; ^cMeasured Day 4.

atacept initiation) suggests that the mechanism(s) for this decrease included an abnormally high excretion of IgG as well as a decrease in IgG production (associated with MMF and CS administration). This hypothesis is supported by the fact that proteinuria levels > 2 g/day are associated with the excretion of large proteins in the urine, which could include IgG. The high levels of proteinuria may have also affected the pharmacokinetics of atacept, since atacept is a protein that may be secreted in the urine in the setting of heavy proteinuria. Baseline GFR was, however, lower in the patients who were randomized to atacept and, thus, the net effect of higher proteinuria and reduced GFR on atacept secretion is not known.

In this study, lymphopenia and low CD4⁺ counts were observed in both patients who developed serious pneumonia. Lymphocyte counts were low in all patients at baseline, before MMF initiation; this could be due to active lupus, as well as CS use. Indeed, lymphopenia and low IgG levels may each have been related to CS use, but were not necessarily related to each other. In clinical studies of atacept to date, including healthy volunteers and patients with rheumatoid arthritis or generalized SLE, no association between atacept and reduced T-cell, neutrophil or lymphocyte counts has been observed [11-13].

Atacept inhibits both APRIL and BlyS, and has been shown to decrease levels of IgG, IgM and IgA, as well as naive B cells and plasma cells [11-13]. In Phase II studies in patients with rheumatoid arthritis, atacept 150 mg was associated with median IgG decreases of approximately 30%. This decrease was near maximal by 12 to 16 weeks, no patients on atacept had IgG levels below 3 g/l, and the rate of serious infections was not notably increased [11-13]. The results reported here are substantially different, suggesting that the biology of the disease likely contributed to this effect, and requires further study; the results may reflect alterations in proteins as yet unidentified in active LN.

Conclusions

Increased risk of serious infections and large decreases in IgG were observed in patients with active LN and nephrotic-range proteinuria, in whom MMF and high-dose CS were initiated two weeks prior to atacept (150 mg, twice weekly). Future studies will be needed to characterize the pharmacokinetic-pharmacodynamic, safety and efficacy profiles of atacept in LN patients.

Abbreviations

anti-dsDNA: antibodies against double-stranded DNA; APRIL: a proliferation-inducing ligand; BlyS: B-lymphocyte stimulator; CTX: cyclophosphamide; CS: corticosteroids; EOT: end of treatment; GFR: glomerular filtration rate; hpf: high-powered field; IgA: immunoglobulin A; IgG: immunoglobulin G; IgM:

immunoglobulin M; LLN: lower limit of normal; LN: lupus nephritis; MMF: mycophenolate mofetil; RBCs: red blood cells; RR: reference range; SLE: systemic lupus erythematosus; ULN: upper limit of normal; UP:Cr: urine protein:creatinine ratio; WBCs: white blood cells.

Acknowledgements

This study was supported by Merck Serono S.A. (Geneva, Switzerland); development partner, ZymoGenetics Inc.(Seattle, USA). Theresa Podrebarac, MD (EMD Serono Inc.) provided clinical support during the conduct of this study. Editorial assistance was provided by Kate Ackrill, Linda Edmondson, and Paul FitzGerald (Syntropy Medica Ltd, Worthing, UK), supported by Merck Serono S.A. (Geneva, Switzerland).

Author details

¹SUNY Downstate Medical Center, 450 Clarkson Avenue, Box 42, Brooklyn, NY 11203, USA. ²EMD Serono Inc., 1 Technology Place, Rockland, MA 02370, USA. ³Merck Serono S.A., Chemin des Mines 9, 1202 Geneva, Switzerland. ⁴ZymoGenetics Inc., 1201 Eastlake Avenue, East Seattle, Washington 98102-3702, USA. ⁵Case Western Reserve University, 2040 Adelbert Rd, Cleveland, OH 44106-7060, USA.

Authors' contributions

EMG participated in the development of the protocol, review and interpretation of the data, manuscript preparation and review. SW contributed to data collection and interpretation, manuscript development and finalization. AR reviewed and interpreted the data, and reviewed the manuscript during its development. SC participated in the statistical analysis of the data, review and interpretation of the data, and review of the manuscript. JH served as Medical Director in the trial, reviewed and interpreted the data, and reviewed the manuscript. ER provided oversight of the study design and participated in the writing and review of the manuscript for accuracy. NGS contributed to data collection and interpretation, and manuscript preparation. All authors read and approved the manuscript for publication.

Competing interests

EMG was a consultant to EMD Serono Inc.; SW is an employee of EMD Serono Inc.; AR and SC are employees of Merck Serono S.A.; JH is, and ER was, employed by ZymoGenetics Inc., Seattle, USA (a Bristol-Myers Squibb company); NGS was awarded funding for an unrelated investigator-initiated project from Merck USA. EMD Serono Inc., Merck Serono S.A. and Merck USA are all affiliates of Merck KGaA, Darmstadt, Germany.

Received: 22 August 2011 Revised: 8 December 2011
Accepted: 7 February 2012 Published: 7 February 2012

References

1. Singh S, Saxena R: **Lupus nephritis**. *Am J Med Sci* 2009, **337**:451-460.
2. Tucci M, Stucci S, Strippoli S, Silvestris F: **Cytokine overproduction, T-cell activation, and defective T-regulatory functions promote nephritis in systemic lupus erythematosus**. *J Biomed Biotechnol* 2010, **2010**:457146.
3. Roschke V, Sosnovtseva S, Ward CD, Hong JS, Smith R, Albert V, Stohl W, Baker KP, Ullrich S, Nardelli B, Hilbert DM, Migone TS: **BlyS and APRIL form biologically active heterotrimers that are expressed in patients with systemic immune-based rheumatic diseases**. *J Immunol* 2002, **169**:4314-4321.
4. Arnett FC, Edworthy SM, Bloch DA, McShane DJ, Fries JF, Cooper NS, Healey LA, Kaplan SR, Liang MH, Luthra HS: **The American Rheumatism Association 1987 revised criteria for the classification of rheumatoid arthritis**. *Arthritis Rheum* 1988, **31**:315-324.
5. Ginzler EM, Dooley MA, Aranow C, Kim MY, Buyon J, Merrill JT, Petri M, Gilkeson GS, Wallace DJ, Weisman MH, Appel GB: **Mycophenolate mofetil or intravenous cyclophosphamide for lupus nephritis**. *N Engl J Med* 2005, **353**:2219-2228.
6. Zhu B, Chen N, Lin Y, Ren H, Zhang W, Wang W, Pan X, Yu H: **Mycophenolate mofetil in induction and maintenance therapy of severe lupus nephritis: a meta-analysis of randomized controlled trials**. *Nephrol Dial Transplant* 2007, **22**:1933-1942.
7. McMillan R, Longmire R, Yelenosky R: **The effect of corticosteroids on human IgG synthesis**. *J Immunol* 1976, **116**:1592-1595.

8. Broeders EN, Wissing KM, Hazzan M, Ghisdal L, Hoang AD, Noel C, Mascart F, Abramowicz D: **Evolution of immunoglobulin and mannose binding protein levels after renal transplantation: association with infectious complications.** *Transpl Int* 2008, **21**:57-64.
9. Appel GB, Contreras G, Dooley MA, Ginzler EM, Isenberg D, Jayne D, Li LS, Mysler E, Sánchez-Guerrero J, Solomons N, Wofsy D, Aspreva Lupus Management Study Group: **Mycophenolate mofetil versus cyclophosphamide for induction treatment of lupus nephritis.** *J Am Soc Nephrol* 2009, **20**:1103-1112.
10. Wofsy D, Appel GB, Dooley MA, Ginzler EM, Isenberg D, Jayne D, Solomons N, Lisk L, The ALMS Study Group: **Aspreva Lupus Management Study maintenance results. The 9th International Congress on SLE June 24-27 2010, Vancouver, Canada. CS12.6 and PO2.E.23.** *Lupus* 2010, **19**:27, doi:10.1177/09612033100190010101.
11. Dall'Era M, Chakravarty E, Wallace D, Genovese M, Weisman M, Kavanaugh A, Kalunian K, Dhar P, Vincent E, Pena-Rossi C, Wofsy D: **Reduced B lymphocyte and immunoglobulin levels after atacept treatment in patients with systemic lupus erythematosus: results of a multicenter, phase Ib, double-blind, placebo-controlled, dose-escalating trial.** *Arthritis Rheum* 2007, **56**:4142-4150.
12. Genovese MC, Kinnman N, de La Bourdonnaye G, Pena Rossi C, Tak PP: **Atacept in patients with rheumatoid arthritis and an inadequate response to tumor necrosis factor antagonist therapy: results of a phase II, randomized, placebo-controlled, dose-finding trial.** *Arthritis Rheum* 2011, **63**:1793-1803.
13. van Vollenhoven RF, Kinnman N, Vincent E, Wax S, Bathon J: **Atacept in patients with rheumatoid arthritis and inadequate response to methotrexate: results of a phase II, randomized, placebo-controlled trial.** *Arthritis Rheum* 2011, **63**:1782-1792.

doi:10.1186/ar3738

Cite this article as: Ginzler *et al.*: Atacept in combination with MMF and corticosteroids in lupus nephritis: results of a prematurely terminated trial. *Arthritis Research & Therapy* 2012 **14**:R33.

**Submit your next manuscript to BioMed Central
and take full advantage of:**

- Convenient online submission
- Thorough peer review
- No space constraints or color figure charges
- Immediate publication on acceptance
- Inclusion in PubMed, CAS, Scopus and Google Scholar
- Research which is freely available for redistribution

Submit your manuscript at
www.biomedcentral.com/submit

