

IX. List of Maps

II.A.1. Irondequoit Bay Study Area

III.A.1. Sampling Sites: Sediment Cores, Aquatic Flora and Fauna,
Bats, and Terrestrial Plant Communities

IV.B.1. Submersed Macrophyte Distributions in June, July and
September 2002

IV.B.2. Submersed Macrophyte Distributions in 1940, 1975 and 1982

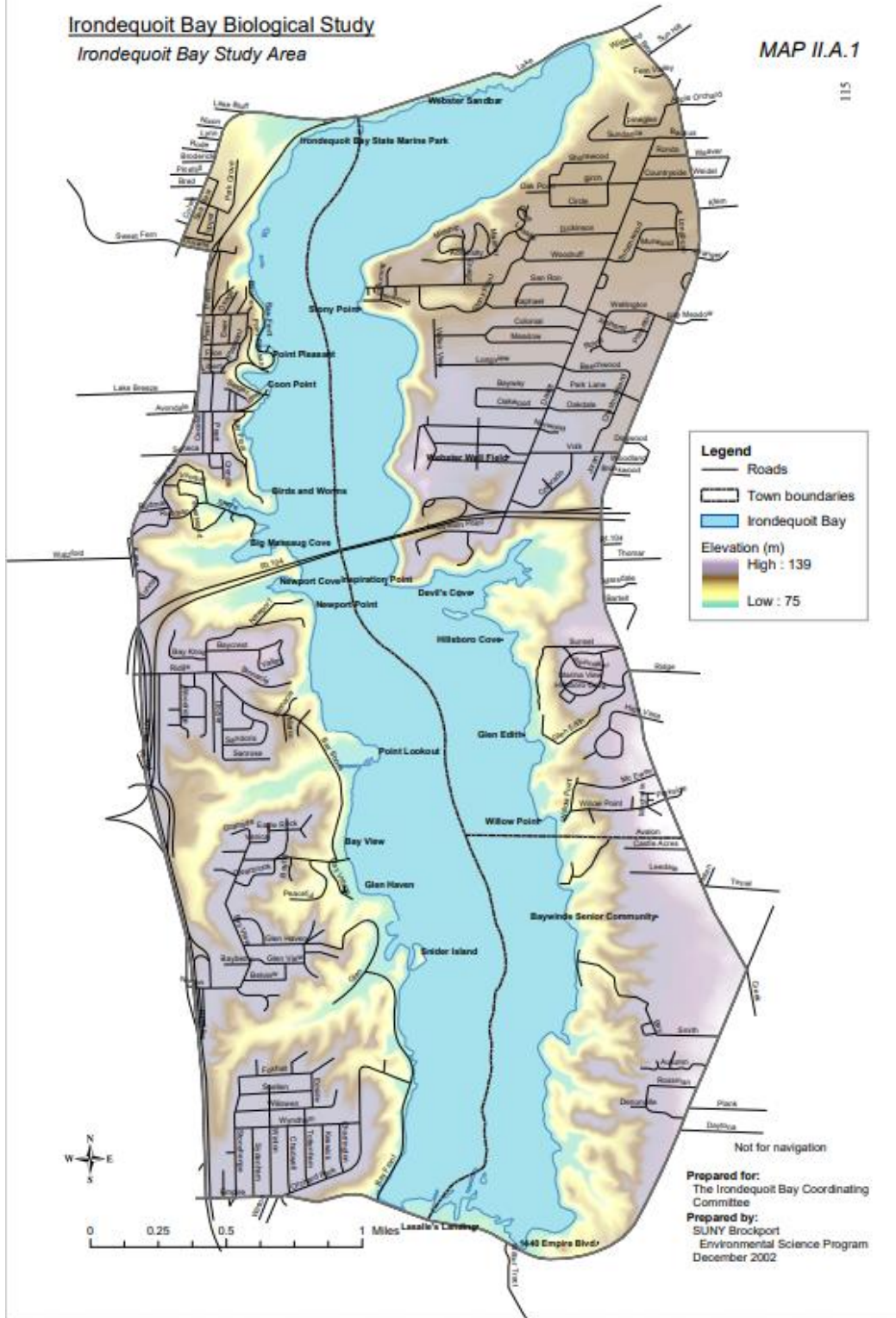
IV.D.1. Erosion Potential and Hazards and Development Constraints
In Terrestrial Portions of the Study Area

IV.D.2. Predominant Overstory Plant Species in Areas T-1 to T-9

Irondequoit Bay Biological Study
Irondequoit Bay Study Area

MAP II.A.1

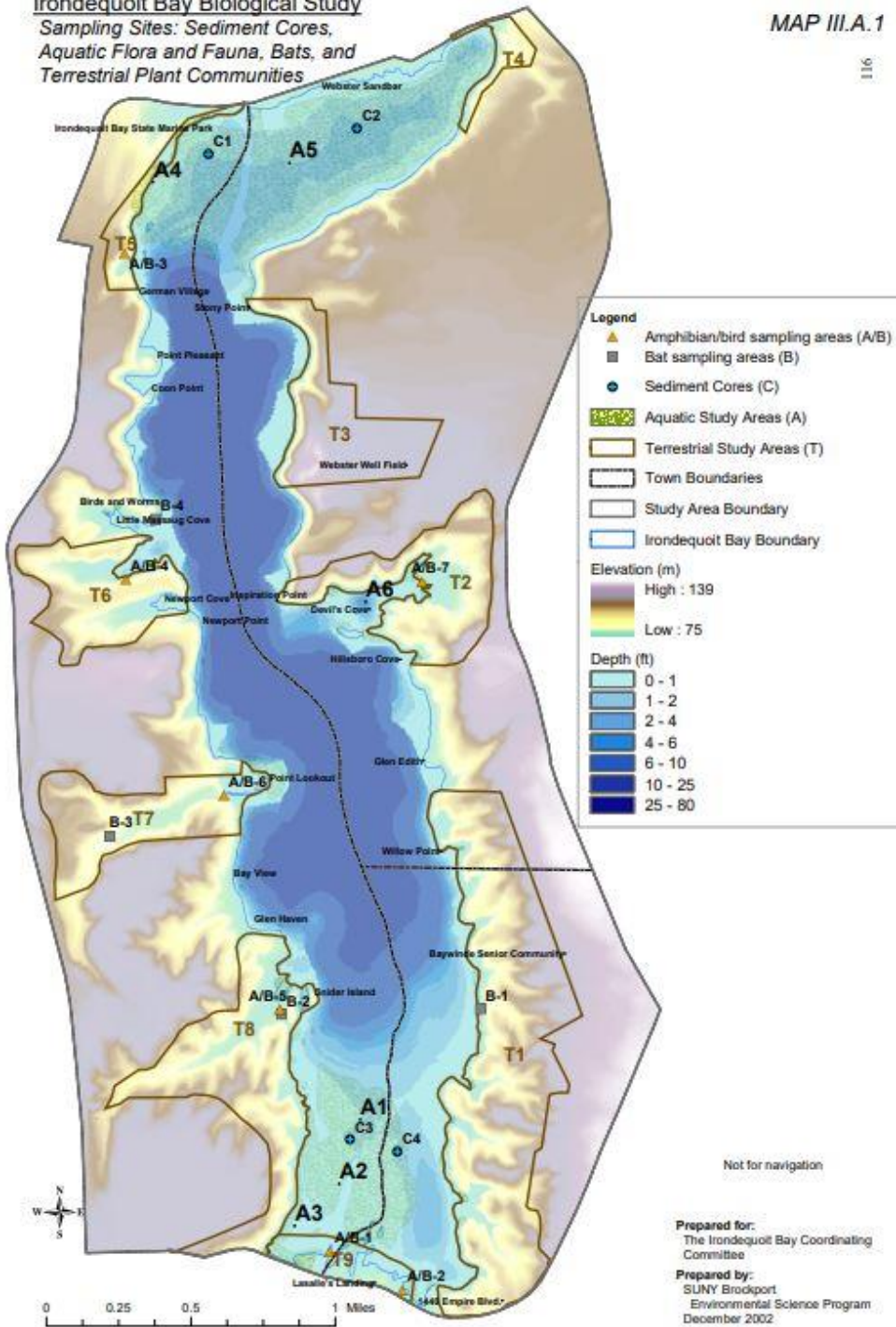
115



Irondequoit Bay Biological Study
Sampling Sites: Sediment Cores, Aquatic Flora and Fauna, Bats, and Terrestrial Plant Communities

MAP III.A.1

116

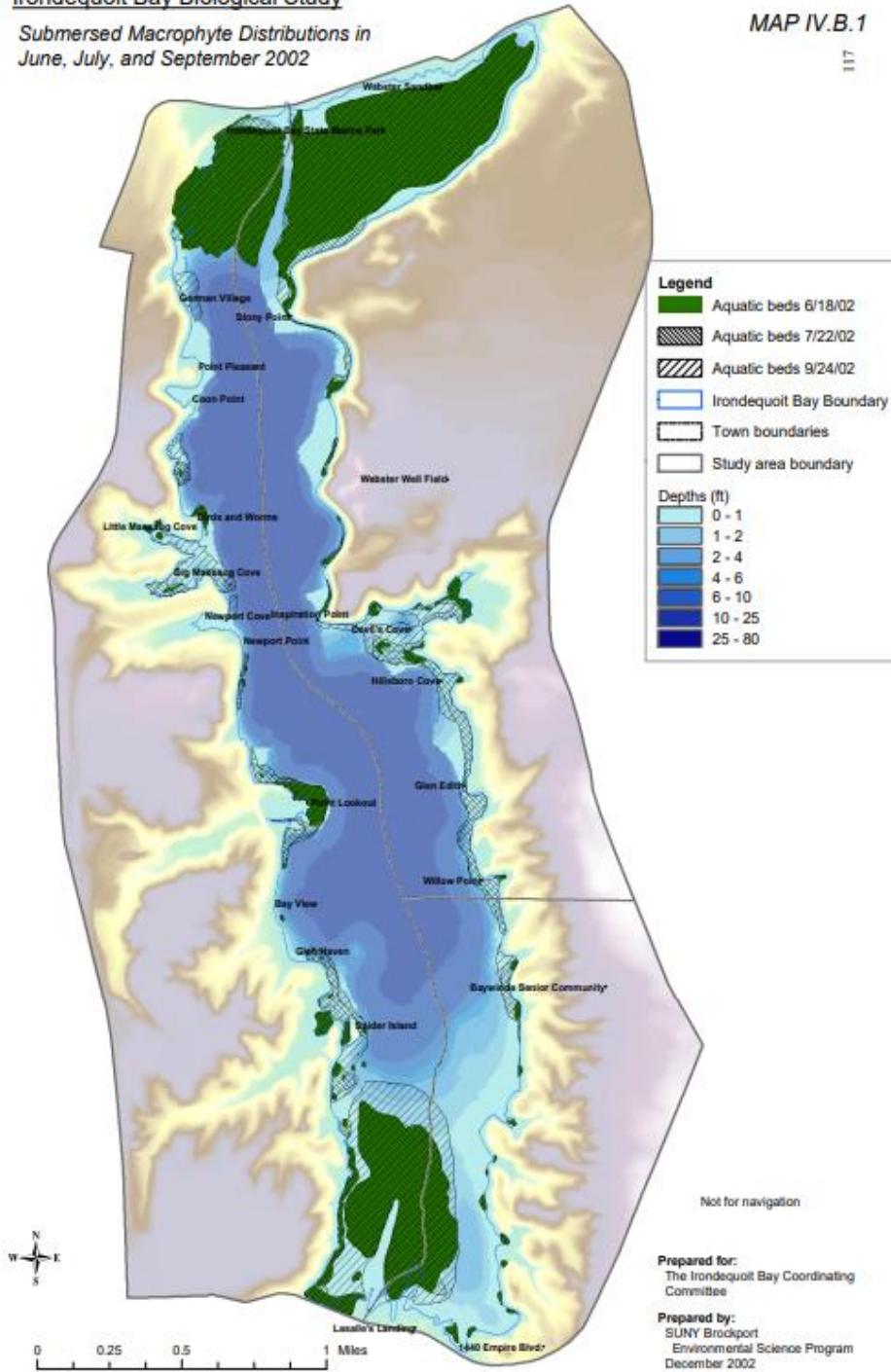


Irondequoit Bay Biological Study

Submersed Macrophyte Distributions in June, July, and September 2002

MAP IV.B.1

11

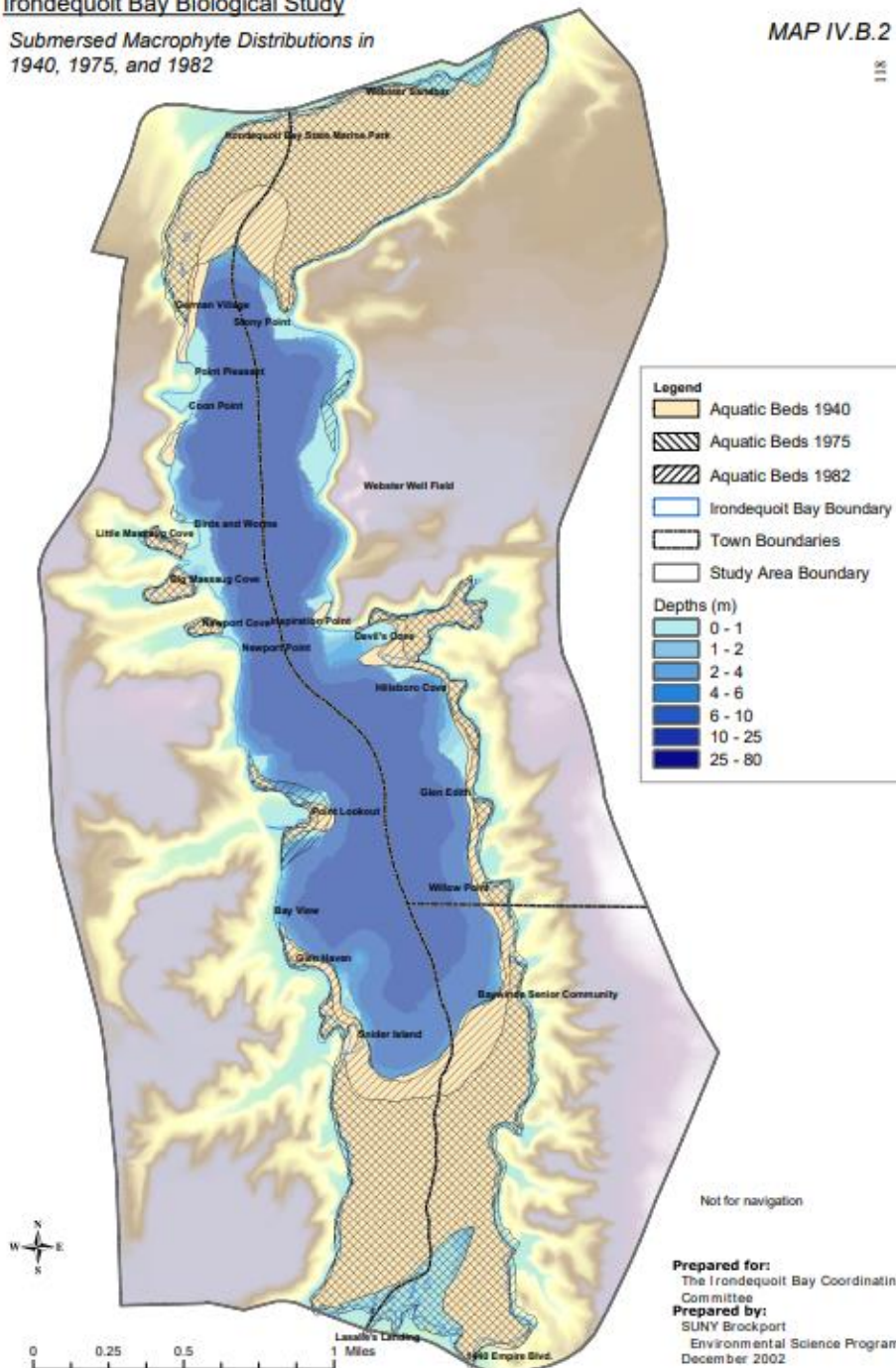


Irondequoit Bay Biological Study

Submersed Macrophyte Distributions in
1940, 1975, and 1982

MAP IV.B.2

118



Irondequoit Bay Biological Study
Erosion Potential and Hazards and Development Constraints in Terrestrial Portions of the Study Area

MAP IV.D.1

119

